

From the Handles to Critical Control Point Products to Proper Brush Selection, Carlisle's Reference section provides you with information to help you make the right choices in your cleaning tool selections to ultimately make your work easier.

Product	Page	Product	Page
Bristle Material Guide	191	Rotary Bristle Material Guide	193B
Chemical Brush Tie-In Guide	188-189	Selecting the Proper Brush Guide	190
Handle Guide	178-181	Selecting the Proper Rotary Brush	193A
Kitchen Brush Guide	186-187	Solvent & Chemical Resistance Information	192-193
Plant Sanitation Guide	182-183	Supermarket Solutions Guide	184-185

# reference

# HANDLE GUIDE

Item	Page	Description	Type of Handle	Recommended Handle	Alternate Handles
36102124		24" Juno Sweep	Juno Style	3620405	—
36102424		24" Juno Sweep	Juno Style	3620405	—
36107618		18" Juno Sweep	Juno	3620405	—
36107624		24" Juno Sweep	Juno	3620405	—
36107636		36" Juno Sweep	Juno	3620405	—
36111		Ceiling Fan & Wall Duster	Telescoping	365408	365404
3611124		24" Heavy Street Sweep	Tapered	40262	40261
361116		16" Heavy Street Sweep	Tapered	40262	40261
361118		18" Heavy Street Sweep	Tapered	40262	40261
36113016		18" Heavy Street Sweep	Tapered	40262	40261
36113016TC		36" Heavy Contractor's Sweep	Threaded	3620055	45267
36113018		18" Heavy Street Sweep	Tapered	40262	40261
36113024		18" Heavy Street Sweep	Tapered	40262	40261
36114016		16" Heavy Street Sweep	Tapered	40262	40261
36114018		18" Heavy Street Sweep	Tapered	40262	40261
36114024		24" Heavy Street Sweep	Tapered	40262	40261
3612036		36" Straight Blade Rubber Squeegee	Tapered	40261	40262
361222		10" Flo-Thru Window Brush	Threaded/Tapered/Flo-Thru/Telescoping	40241	40225
361410		12" Plastic Lobby Dustpan	Threaded	36202025	—
361411		Duo-Pan™ Lobby Dustpan Combo	Threaded	36202025	—
361600		16" Applicator	Threaded	45267	40271
36175		10" Stiff Bristle Deck Scrub	Tapered	40261	40262
36190		10" Duo-Surface® Floor Scrub	Threaded / Flo-Thru	40241	40225
36190		10" Dual Action® Scrub Brush	Threaded	40225	45267
36191		10" Tynex® A Grit Nylon Deck Scrub	Threaded	45267	40271
36192		10" Palmyra Deck Scrub	Threaded or Tapered	45267	40225
36192TC		10" Palmyra Deck Scrub	Threaded	45267	40271
36193		10" Tampico Deck Scrub	Threaded	45267	40271
36193MXTC		10" Deck Scrub	Threaded	45267	40271
36193TC		10" Tampico Deck Scrub	Threaded	45267	40271
361966		Triangle Scrubber	Threaded	40225	3620104
362024		24" Floor Sweep	Threaded	45267	40271
36204818		18" Foam Block Sweep	Threaded	40225	45267
36204824		24" Floor Sweep	Threaded	40225	45267
36204824		24" Foam Block Sweep	Threaded	40225	45267
36207218		18" Foam Block Sweep	Threaded	40225	45267
36207224		24" Foam Block Sweep	Threaded	40225	45267
36219224		FVP 24" Tampico Floor Sweep	Threaded	45267	40271
36219318		FVP 18" Crimped Polypropylene Sweep	Threaded	45267	40271
36219416		FVP 16" Palmyra Street Sweep	Threaded	45267	40271
36219516		FVP 16" Street Sweep	Threaded	45267	40271
36219536		FVP 36" Flagged Floor Sweep	Threaded	45267	40271
3621997		FVP 10" Dual Surface® Vehicle Brush	Threaded / Flo-Thru	40241	40225
362208P18		18" Foam Block Sweep	Threaded	40225	45267
362208P24		24" Foam Block Sweep	Threaded	40225	45267
36275		12" Stiff Bristle Deck Scrub	Tapered	40261	40262

# HANDLE GUIDE

Item	Page	Description	Type of Handle	Recommended Handle	Alternate Handles
36281H		Plastic Window Squeegee Housings	Telescoping	365404	—
36283H		Stainless Steel Window Squeegee Housings	Telescoping	365404	—
36284H		Brass Window Squeegee Housings	Telescoping	365404	—
36293P		12" Deck Scrub	Threaded	40225	45267
36297		18" Carpet Pile Brush	Tapered	40261	40262
36324C		24" Curved Squeegee	Tapered	40261	40262
3638831		8" Swivel Scrub®	Threaded	40224	40285
36395		14" Palmyra Deck Scrub	Tapered	40261	40262
3643424		24" Floor Sweep	Threaded	45267	40271
3643424TC		24" Contractor's Sweep	Threaded	45267	40271
36466TC		10" Flo-Tru Brush	Threaded / Flo-Thru	40241	40225
36467TC		10" Flo-Tru Brush	Threaded / Flo-Thru	40241	40225
3647324		24" Dust Mop w/3" Frame	Dust Mop	364105	45850
3647536		36" Dust Mop w/5" Frame	Dust Mop	364105	45850
36490		Wedge Dust Mop	Threaded	45267	40271
3651		4-1/2" Round Window Brush	Threaded/Tapered/Flo-Thru/Telescoping	40241	40250
365300		8" Swivel Scrub®	Threaded	3620194	40225
365310		8" Swivel Scrub®	Threaded	3620194	40225
365320		7-1/2" Swivel Head Grout Brush	Threaded	3620194	40225
365380		9-1/4" Pad Holder	Threaded	40225	45267
365381		9-1/4" Pad Holder	Threaded	40232	45267
365552403TC		6" Block Roofing & Brick Brush	Tapered	40261	40262
365552504TC		8" Block Roofing & Brick Brush	Tapered	40261	40262
365552624		24" Deluxe Finishing Brush	Threaded	45267	40271
365552724		24" Finishing Brush	Threaded	45267	40271
365643002		15-1/2" x 13" Cros Foot Double Brush	Threaded	45267	40271
36567		One-Piece Rubber Squeegee	Threaded	40225	40224
366318		18" Straight Squeegee	Tapered	40261	40262
366530		30" Red Foam Rubber Squeegee	Tapered	40261	40262
367104TC		7" Block Roofing & Brick Brush	Threaded	45267	40271
367117TC		8-1/4" Acid Wash Brush	Tapered	40261	40262
367118TC		8-1/4" Acid Wash Brush	Tapered	40261	40262
367395TC		24" Rough /Scraperbroom® Sweep	Threaded	3620055	45267
367518		18" Heavy Sweep	Threaded	40225	40224
367618		18" Heavy Sweep	Tapered	40267	40225
367624		24" Heavy Sweep	Tapered	40267	40225
36858		7" Duo-Sweep® Lobby Broom	Threaded	36202025	—
36862		7" Duo-Sweep® Lobby Broom	Threaded	36202025	—
36863		9" Duo-Sweep® Light Industrial Broom	Threaded	362019414	—
36864		9" Duo-Sweep® Light Industrial Broom	Threaded	362019414	—
36866		Duo-Sweep® Flagged Lobby Broom Head w/8" Flare	Threaded	36202025	—
36867		Duo-Sweep® Flagged Broom Head w/12" Flare	Threaded	362029403	3620194
36868		Duo-Sweep® Unflagged Broom Head w/12" Flare	Threaded	362029403	3620194
36883		9" Duo-Sweep® Warehouse Broom	Threaded	362029403	3620194
36884		9" Duo-Sweep® Warehouse Broom	Threaded	362029403	3620194
369016C		#16 Cotton Kwik-On™ Mop	Mop	40345	—

# HANDLE GUIDE

Item	Page	Description	Type of Handle	Recommended Handle	Alternate Handles
369024R		#24 Rayon Kwik-On™ Mop	Mop	40345	—
369066		#16 Rayon Narrowband Mop	Mop	41664	369595
369074		#24 Rayon Narrowband Mop	Mop	41664	369595
369082		#32 Rayon Narrowband Mop	Mop	41664	369595
369252		Looped End Wideband/Tailband Small Yellow Band Mop	Mop	369595	369375
369320		Rough 'N Ready™ Rough Surface Mop	Mop	41664	369595
369412		Looped End Blended Small Yellow Band Mop	Mop	369595	369375
369418		Looped End Blended Medium Green Band Mop	Mop	369595	369375
369424		Looped End Blended Large Red Band Mop	Mop	369595	369375
369430		Looped End Blended X-Large Blue Band Mop	Mop	369595	369375
369454		Looped End Blended Large Red Band Mop	Mop	369595	369375
369472		Looped End Blended Small Yellow Band Mop	Mop	369595	369375
369550		Looped End Wideband/Tailband Small Yellow Band Mop	Mop	369595	369375
369674		Finishing Mop	Mop	369595	369375
369724		#24 Cotton Narrowband Mop	Mop	41664	40340
369824		Cotton Cut End #24 Small Mop	Mop	41664	369595
40026		30" Broiler Master	Threaded	020-30B	—
40040		5-1/2" x 7-1/2" Tank & Kettle Brush	Threaded	40225	40230
40041		5-1/2" x 7-1/2" Tank & Kettle Brush	Threaded	40225	40230
40042		5-1/2" x 9" Tank & Kettle Brush	Threaded	40225	40230
40043		5-1/2" x 9" Tank & Kettle Brush	Threaded	40225	40230
40045		Vat & Cylinder Brush	Threaded	40225	40230
40050		9" Truck Brush	Threaded / Flo-Thru	40241	40225
40069		14" Strip Washer	Threaded or Tapered	40220	40261
40070		12" Single-Blade Squeegee	Tapered	40261	40262
40071		16" Single-Blade Squeegee	Tapered	40261	40262
40072		8" Double-Blade Squeegee	Tapered	40261	40262
40073		10" Double-Blade Squeegee	Tapered	40261	40262
40074		14" Double-Blade Squeegee	Tapered	40261	40262
40075		18" Straight Steel Squeegee	Tapered	40261	40262
40076		24" Straight Steel Squeegee	Tapered	40261	40262
40077		36" Straight Steel Squeegee	Tapered	40261	40262
40078		24" Curved Steel Squeegee	Tapered	40261	40262
40080		15" Straight Steel Squeegee	Tapered	40261	40262
40081		18" Straight Steel Squeegee	Tapered	40261	40262
40082		24" Straight Steel Squeegee	Tapered	40261	40262
40083		30" Straight Steel Squeegee	Tapered	40261	40262
40146		3" Plastic Block Brush	Threaded (Female )	40236	40237
40147		4" Plastic Block Brush	Threaded (Female )	40236	40237
40148		5" Plastic Block Brush	Threaded (Female )	40236	40237
40290		30" Broiler Master	Threaded	020-30B	—
40291		8-1/2" Oven Brush & Scraper	Threaded	40275	—
40293		10" Pizza Oven Brush	Threaded	40275	—
40417		Hi-Lo Floor Scrub	Threaded / Flo-Thru	40241	40225
40422		10" Dual Action® Scrub Brush	Threaded	45267	40225
40423		10" Hi-Lo™ Floor Scrub Brush	Threaded	45267	40225

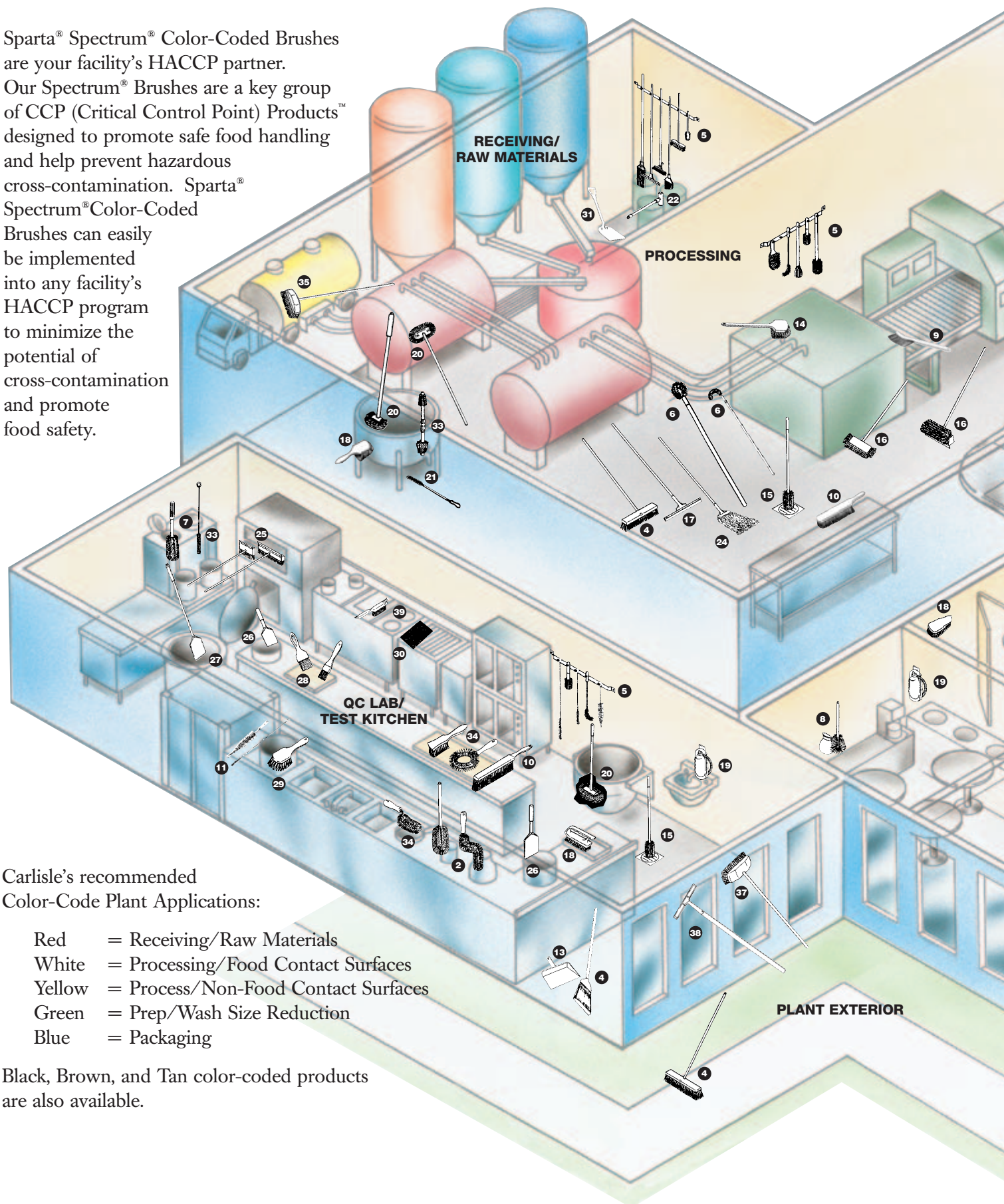
# HANDLE GUIDE

Item	Page	Description	Type of Handle	Recommended Handle	Alternate Handles
40430		9" Floor Scrub Brush	Threaded	3620194	40225
40561		18" Foam Block Sweep	Threaded	40225	45267
40562		24" Foam Block Sweep	Threaded	40225	45267
40564		18" Foam Block Sweep	Threaded	40225	45267
40565		24" Foam Block Sweep	Threaded	40225	45267
41002		Vat & Cylinder Brush	Threaded	40225	40230
41027		12" Double-Blade Squeegee	Tapered	40261	40262
41045		Vat & Cylinder Brush	Threaded	40225	40230
41078		8" Stainless Steel Floor Scraper	Tapered	40261	40262
41093		6" Plastic Block Brush	Threaded (Female )	40236	40237
41177		6" x 10-1/2" Jumbo Tank Brush	Threaded	40225	40230
41200		2" x 8" Round Tank Brush	Threaded	40225	40230
41220		6" x 10-1/2" Jumbo Tank Brush	Threaded	40225	40230
41251		6" Powder Bag Brush	Threaded (Female )	41214	41236
41265		8-1/2" Powder Bag Brush	Threaded (Female )	41214	41236
41271		6" Powder Bag Brush	Threaded (Female )	41214	41236
41272		6" Powder Bag Brush	Threaded (Female )	41214	41236
41278		10" Flu-Thru Brush	Threaded / Flo-Thru	40241	40225
41323		9" Tile & Grout Brush	Threaded	40225	40230
41390		12" CIP Circular Brush	Threaded/Tapered/Flo-Thru/Telescoping	40241	40225
41567		18" Plastic Squeegee	Threaded	40225	45267
41568		24" Plastic Squeegee	Threaded	40225	45267
41619		8" Threaded SS Floor Scraper	Threaded	40225	45267
41870		18" Anchor Omni Sweep™	Anchor	45270	—
41871		24" Anchor Omni Sweep™	Anchor	45270	—
41872		36" Anchor Omni Sweep™	Anchor	45270	—
41880		18" Omni Sweep™	Threaded	40225	45267
41881		24" Omni Sweep™	Threaded	40225	45267
41890		24" Spectrum® Omni Sweep	Threaded	40225	45267
41891		18" Spectrum® Omni Sweep	Threaded	40225	45268
45013TC		18" Contractor's Sweep	Threaded	45267	40224
45014		24" Floor Sweep	Threaded	45267	40225
45031		24" Floor Sweep	Threaded	45267	40225
45043TC		36" Contractor's Sweep	Threaded	3620055	45267
45056TC		36" Contractor's Sweep	Threaded	3620055	45267
45073		24" Floor Sweep	Threaded	45267	40224
45201TC		36" Heavy Contractor's Sweep	Threaded	3620055	45267
45222		24" w/3-1/2" Palmyra Sweep	Threaded	45267	40225
45224TC		36" Palmyra Contractor's Sweep	Threaded	45267	40224
45236		16" Palmyra Street Sweep	Tapered	40262	40261
45236TC		36" Palmyra Contractor's Sweep	Threaded	45267	40224
45350		4-1/2" Round Window Brush	Threaded/Tapered/Flo-Thru/Telescoping	40225	45267
45757		13" Stadium Broom	Threaded	45267	40224



# PLANT SANITATION GUIDE

Sparta® Spectrum® Color-Coded Brushes are your facility's HACCP partner. Our Spectrum® Brushes are a key group of CCP (Critical Control Point) Products™ designed to promote safe food handling and help prevent hazardous cross-contamination. Sparta® Spectrum® Color-Coded Brushes can easily be implemented into any facility's HACCP program to minimize the potential of cross-contamination and promote food safety.



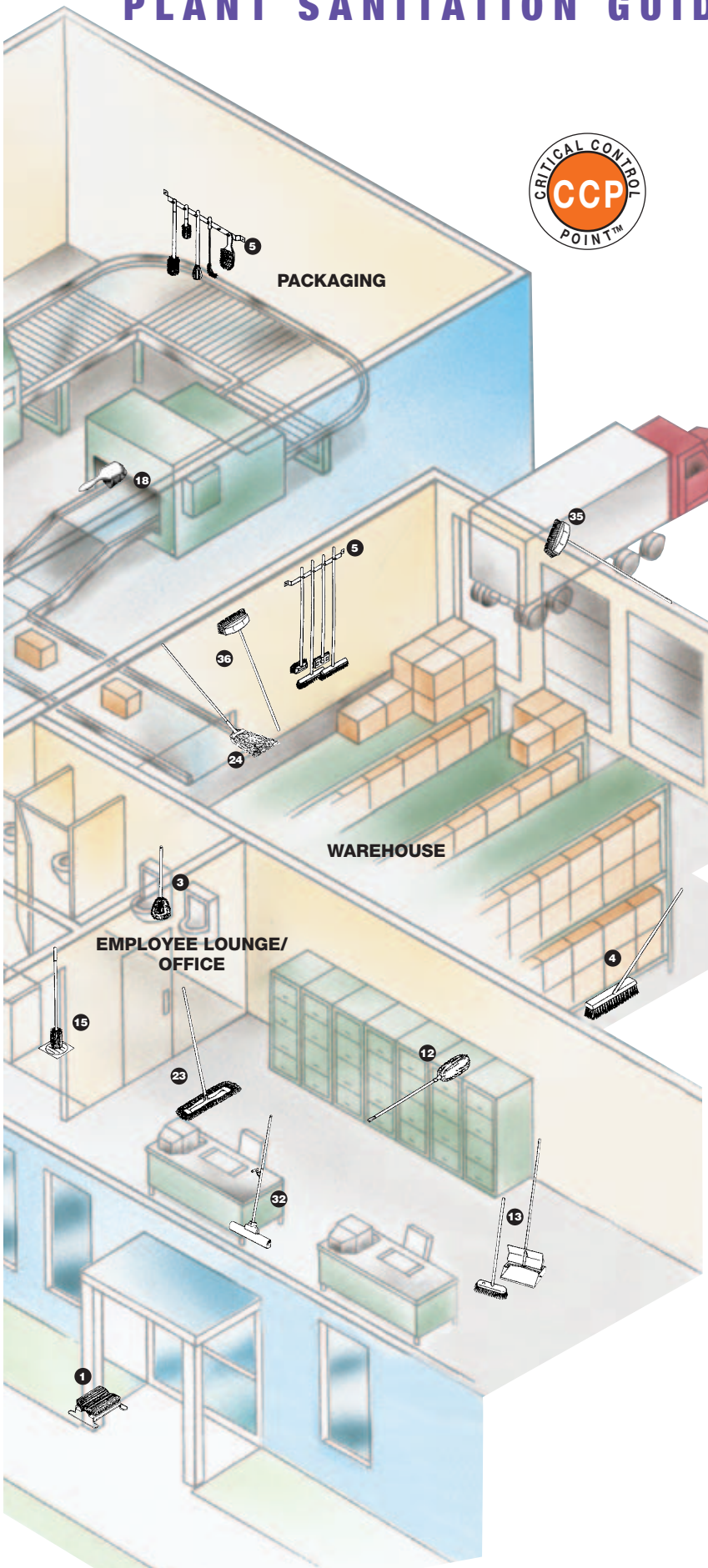
Carlisle's recommended Color-Code Plant Applications:

- Red = Receiving/Raw Materials
- White = Processing/Food Contact Surfaces
- Yellow = Process/Non-Food Contact Surfaces
- Green = Prep/Wash Size Reduction
- Blue = Packaging

Black, Brown, and Tan color-coded products are also available.



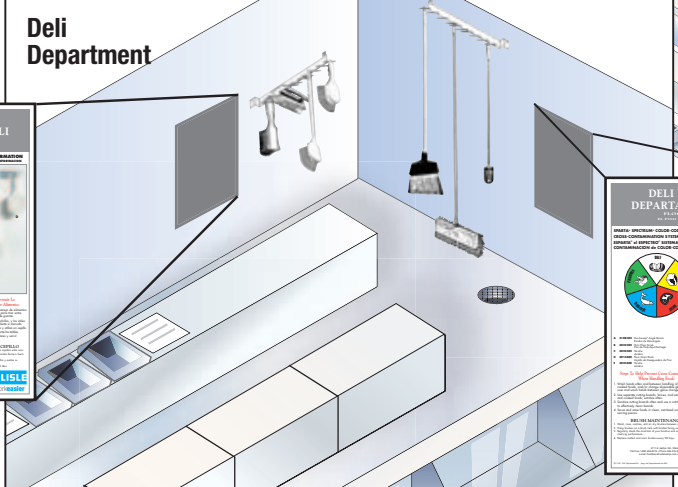
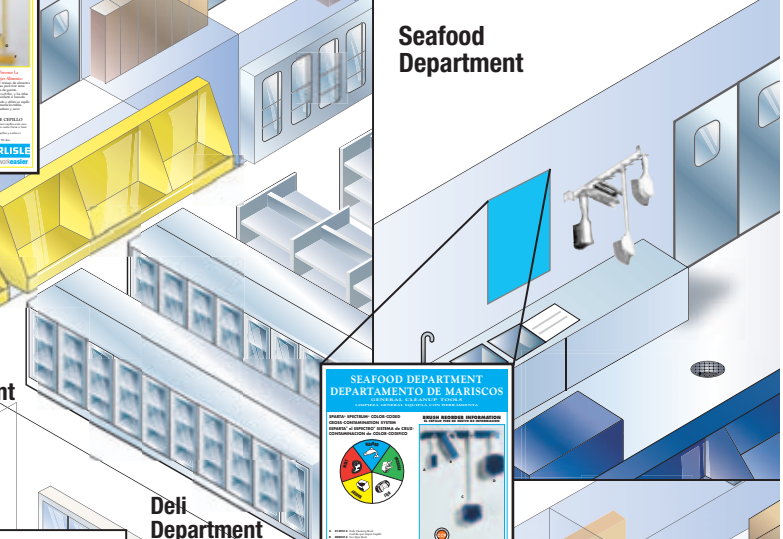
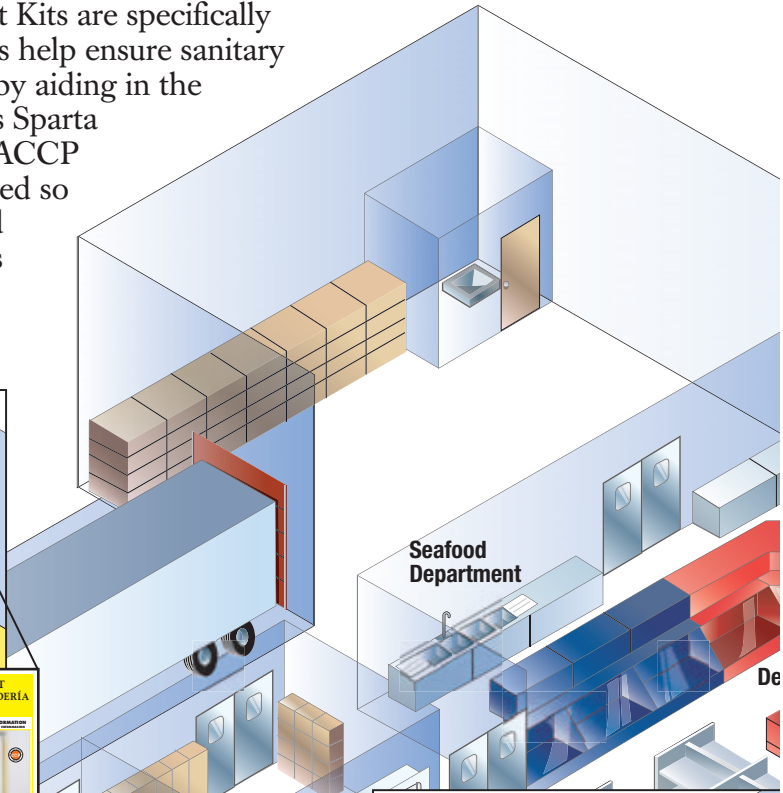
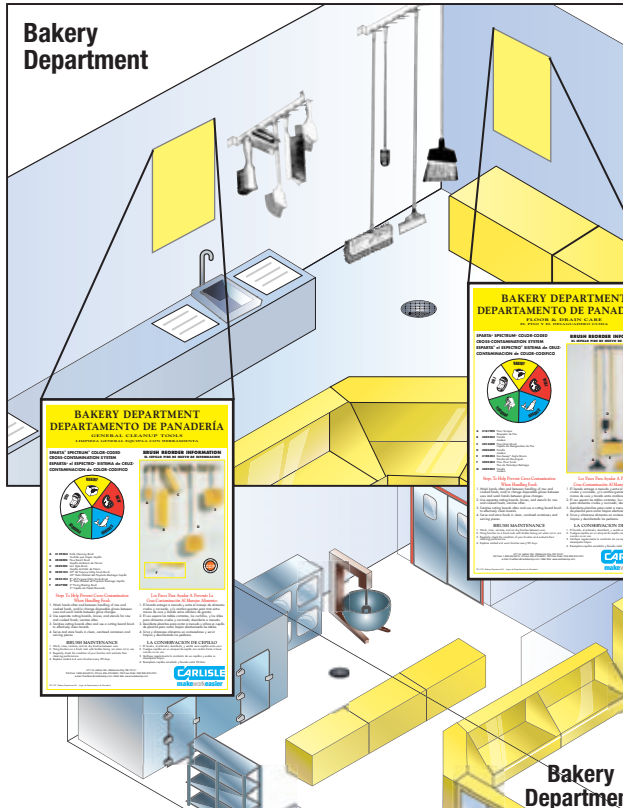
# PLANT SANITATION GUIDE



No.	Prod. Prod.	Description
1	40424	Boot 'N Shoe Brush
2	40469, 40470	Bottle Brushes
3	40140, 36P5	Bowl Brushes
4	41082, 41083 41891, 41890	Sparta® Spectrum® Angle Brooms Sparta® Spectrum® Omni Sweep®
5	40735 40731	Sparta® Spectrum® Brush Rack Broom & Brush Holder System
6	41100, 41390	CIP Clean-In-Place Brushes
7	40002, 40003	Sparta® Spectrum® Atlas Multi-Purpose Brushes
8	40153 40673 40025	10" Coffee Decanter Brush 25" Urn Gauge Brush 16" Coffee Decanter Brush
9	41198	Sparta® Spectrum® Wand Brush
10	40480 36846	8" Sparta® Spectrum® Counter Brushes 8" Counter Brush w/ Nylex Bristles
11	40159, 40028	Dishwasher Machine Brushes
12	45733	Telescoping Wool Duster
13	36859 361437 361410	Lobby Broom Dustpan Duo-Pan® Lobby Dustpan
14	40541, 40501	Sparta® Spectrum® General Clean-Up Brushes
15	40146 40236	Floor Drain Brush 36" Floor Drain Brush Handle
16	40423 36190	Hi-Lo™ Floor Scrub Brushes Dual Surface® Floor Scrub w/ Squeegee
17	41567, 41568	Sparta® Spectrum® Color-Coded Squeegees
18	45494 40024 40540, 40500 40541, 40501 40521	Sparta® Spectrum® Pointed End Scrub Brush Sparta® Spectrum® Iron Handle Scrub Brush Utility Scrub Brushes Sparta® Spectrum® Scrub Brushes Sparta® Spectrum® Cutting Board Brush
19	40021 36239	Hand & Nail Brush Kit Hand & Nail Brush
20	41200 41177	Vat & Kettle Brush Sparta® Spectrum® Jumbo Tanker Brush
21	40110	Straight Fryer Brush
22	40704	Sanitary Mallet
23	3648724 w/364205	Dust Mop
24	369424 w/36968	Wet Mop
25	45772, 40290, 40291, 40293	Grill & Oven Brushes
26	40350, 40351	Spatulas
27	40352, 40357 40354, 40356	Paddle Scrapers
28	40392, 40401 362722, 362742	Pastry/Basting Brushes
29	40541, 40501	Utility Scrub Brushes
30	36396, 36390	Scrub Pads
31	41076, 41077	Sparta® Spectrum® Sanitary Shovels
32	45662, 40301	Sponge Mops
33	40679, 41170	Sparta® Spectrum® Valve & Fitting Brushes
34	40163, 40164	Vegetable & Utensil Brushes
35	361209, 361234	Vehicle Brushes
36	40050, 40540	Sparta® Spectrum® 9-1/2" Flo-Thru Wall Brushes w/ 60" Aluminum Flo-Thru Handle
37	361222	10" Window Cleaning Brushes
38	36281CR w/328H	Window Squeegee
39	40670, 40672	Wire Scratch Brushes

# SUPERMARKET SOLUTIONS

Carlisle's Sparta® Spectrum® Color-Coded Supermarket Kits are specifically designed to support your HACCP initiatives. These kits help ensure sanitary maintenance of equipment and designated work areas by aiding in the prevention of hazardous cross-contamination. Carlisle's Sparta Spectrum Supermarket Kits make it easy to set up a HACCP program in your store. Five color-coded kits are designed so your employees can segregate brushes by purposes and work zones. Carlisle has identified five Spectrum colors for HACCP work zone identification.



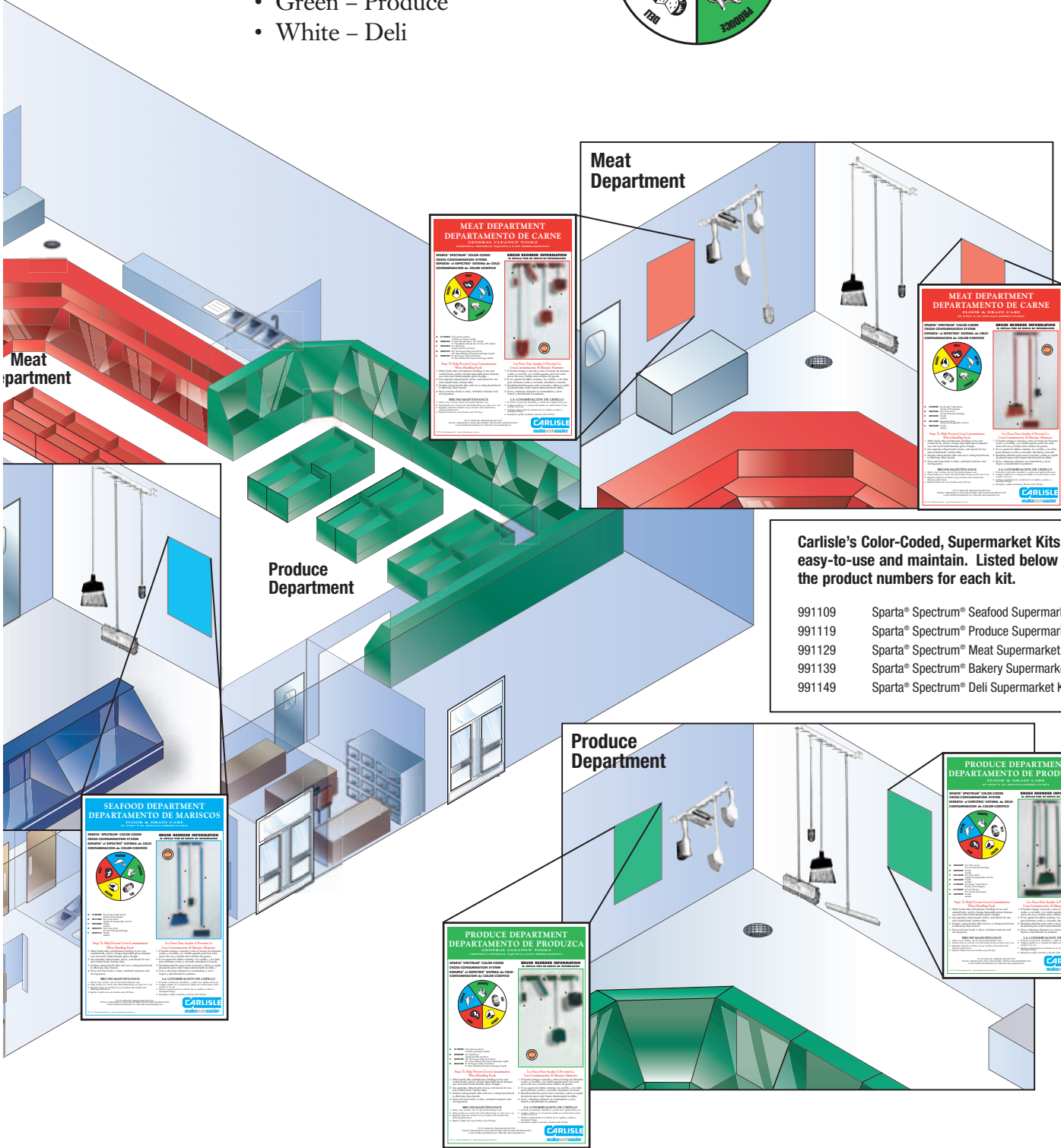


# SUPERMARKET SOLUTIONS



The five HACCP work zones are:

- Yellow – Bakery
- Blue – Seafood
- Red – Meat
- Green – Produce
- White – Deli



**Carlisle's Color-Coded, Supermarket Kits are easy-to-use and maintain. Listed below are the product numbers for each kit.**

991109	Sparta® Spectrum® Seafood Supermarket Kit
991119	Sparta® Spectrum® Produce Supermarket Kit
991129	Sparta® Spectrum® Meat Supermarket Kit
991139	Sparta® Spectrum® Bakery Supermarket Kit
991149	Sparta® Spectrum® Deli Supermarket Kit

# KITCHEN BRUSH GUIDE

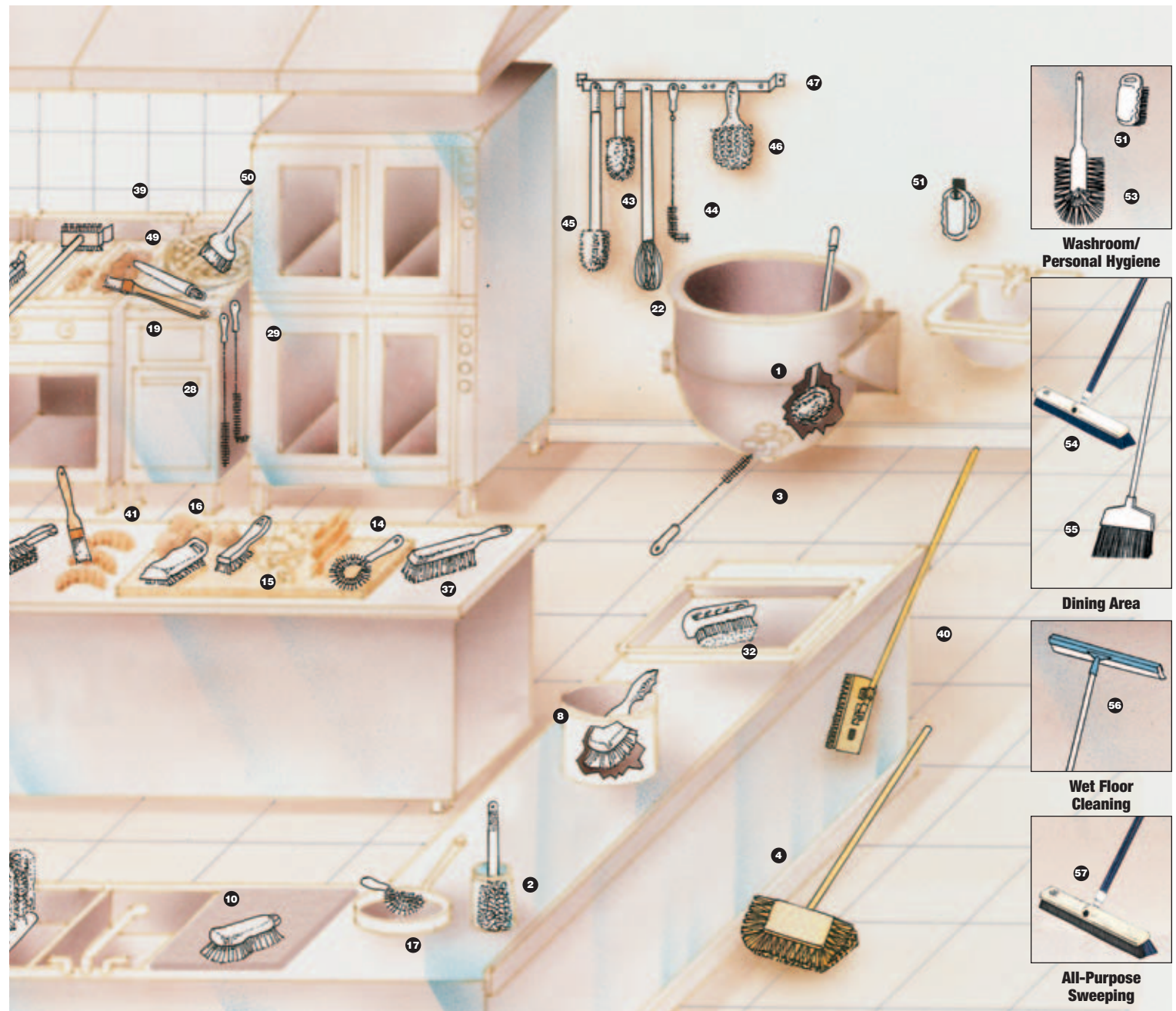


**Carlisle, The Leader in Food Safety with Critical Control Point Products™**

No.	Prod. No.	Description	Page No.	No.	Prod. No.	Description	Page No.
1	40043	Sparta® Spectrum® Tank and Kettle Brush	130	16	40412	Sparta® Potato Brush	156
2	40001	Sparta® Spectrum® Valve & Fitting Brush	141	17	40163	Utensil Brush	156
3	40150	Straight Kettle/Fryer Coil Brush	142	18	40401	Sparta® Meteor® Pastry Brush	154
4	40422	Dual Surface® Floor Scrub Brush w/End Bristles w/40225 Self-Locking Flex-Tip™ Handle	17, 164	19	40370	Sparta® Chef Series™ Long Reach Basting Brush	155
5	40003	Sparta® Spectrum® Valve & Fitting Brush	131	20	40380	Sparta® Chef Series™ Round Basting Brush	155
6	40000	Sparta® Spectrum® Valve & Fitting Brush	141	21	40374	Sparta® Chef Series™ Hot Basting Brush	155
7	40461	Triple Glass Washer Brush	149	22	40681	Sparta® French Whip	157
8	40546	Utility Scrub Brush	35	23	40352	Nylon Paddle Scraper	146
9	40501	Sparta® Spectrum® Long Handle Scrub Brush	129, 151	24	40350	Standard Spatula	146
10	40521	Sparta® Spectrum® Cutting Board Brush	128	25	40291	Oven Brush and Scraper Head w/40275 Handle	162
11	40025	Coffee Decanter Brush	158	26	40293	Pizza Oven Brush w/40275 Handle	162
12	41263	All Purpose Tube Brush	142	27	40529	Lettuce Cutter Brush	157
13	40673	Coffee Urn Brush	158	28	40150	Straight Kettle Coil Brush	142
14	40164	Vegetable Brush	156	29	40152	L-Tipped Kettle Coil Brush	142
15	40411	Mushroom Brush	156	30	40159	Dishwasher Machine Brush	159
				31	40028	Dishwasher Spray Arm Brush	159



# KITCHEN BRUSH GUIDE



No.	Prod. No.	Description	Page No.	No.	Prod. No.	Description	Page No.
32	40024	Sparta® Spectrum® Iron Handle Scrub Brush	129, 151	47	40735	Sparta® Spectrum® Brush Rack	140, 151
33	40001	Sparta® Spectrum® Valve & Fitting Brush	141	48	40401	Sparta® Meteor® Pastry Brush	154
34	40413	Dishwash Brush	160	49	40115	Waffle Iron Buttering Brush	160
35	40423	Sparta® Spectrum® Hi-Lo™ Floor Scrub Brush (40285 Handle)	137, 151	50	40114	Waffle Iron Cleaning Brush	160
36	40671	Wire Scratch Brush w/Scraper	162	51	40020	Hand & Nail Brush	38, 152
37	40480	Sparta® Spectrum® Counter Top Brush	136, 151	52	40423	Sparta® Spectrum® Hi-Lo™ Floor Scrub Brush w/40225 Self-Locking Flex-Tip™ Handle	17, 137
38	40480	Sparta® Spectrum® Counter Top Brush	136, 151	53	40140	No-Splash Bowl Brush	42
39	40290	Broiler Master Grill Brush	162	54	41890	18" Sparta® Spectrum® Omni Sweep™ w/40225 Self-Locking Flex-Tip™ Handle	138
40	40430	All-Around™ Floor Scrub Brush w/40225 Self-Locking Flex-Tip™ Handle	16	55	41075	Sparta® Spectrum® Duo-Sweep® Angle Broom	18, 137
41	40377	Sparta® Chef Series™ Croissant Brush	155	56	41568	Sparta® Spectrum® Color-Coded Squeegee	138
42	40146	Floor Drain Brush w/40237 Handle	44, 151	57	41881	24" Omni Sweep™ w/40225 Self-Locking Flex-Tip™ Handle	8
43	40004	Sparta® Spectrum® Valve & Fitting Brush	131				
44	40111	L-Tipped Kettle/Fryer Coil Brush	158				
45	40006	Kettle/Fryer Coil Brush	131				
46	40541	Sparta® Spectrum® Hand Scrub	129, 151				



# CHEMICAL BRUSH TIE-IN

Cleaning Activity	Chemical Exposure/ Specific Use	Product Description	Product #	Notes	
Beverage Service and Manual Dishwashing	Coffee, Vinegar, Alcohol, Iodine, General Purpose Cleaner	Carafe/Bottle Brush Coffee Decanter Brush Glass Washing Brushes	4000002 4150600 4002500	Other colors available Other variations available Other variations available	
	Pot and Pan Detergent, Degreaser, Quat Sanitizer	12" Dishwash Brush 8" Dish/Sink Brush	4041300 361014000		
Drains, Washroom, and Hygiene	Bowl Cleaner	17" No Splash Polyester Bowl Brush 14-1/2" Bowl Brush w/Caddy	4014000 36719700		
	Drain Cleaner	3" Drain Brush Head 36" Drain Brush Handle	4014600 4023600	Other sizes available Other sizes available	
	Hand Soap	3-1/2" Hand & Nail Brush 5" Hand & Nail Brush Kit	3623900 4002100	Low cost alternative Brush only also available	
Floor Sweeping	Dust Mopping	36" Oblong Dust Mop w/60" handle	4169400	Other sizes available	
		Wedge Mop w/60" handle	4167500		
		60" Snap On Swivel Dust Mop Handle	4585000	Other handles available	
	Host Stand	Duo-Pan Combo	36141103		
	Small Area General Clean-up	Duo-Sweep™ Lobby Angle Broom Flagged	3686100		
		Duo-Sweep™ Medium Duty Angle Broom Flagged	3686500	Other colored handles available	
		Duo-Sweep™ Heavy Duty Angle Broom Unflagged	3688500	Other variations available	
Duo-Sweep 9" Light Flagged Duo-Sweep 9" Light Stiff Unflagged		3686314 3686403	Other sizes and styles available		
Sweeping Compound/ Large Area General Clean-up	Omni Sweep™ 18" Plastic Block* Omni Sweep™ 24" Plastic Block* Omni Sweep™ 36" Wood Block**	4188000 4188100 4187200	*Note: Uses 4022514 Flex Tip Fiberglass Handle **Note: 36" Omni Sweep uses 4527000 Anchor Style Handle		
Food Prep	Fruit & Veggie Wash	Vegetable Brush	4016402	Other variations available	
	Kettle Care	Kettle Care Kit	4150200		
Hard Surface Clean-up and Sanitizing	All Purpose Cleaner, Peroxide Cleaner, Quat Sanitizer	20" Utility Scrub w/Polyester bristles 6" Cutting Board Brush 8" Utility Scrub w/Polyester bristles	4050100 4052100 4054100	All available in six colors; do not use w/chlorine or strong alkaline degreasers	
Pastry/Basting Brushes	Butter, Oils, Acidic Sauces (tomato based)	12" handle, 4" wide Boar Bristle Basting Brush	4037100	Other sizes and bristle materials available	
		2" Wide Nylon Bristle Brush	362722		
Window Washing	Window Cleaner	12" Single Blade Window Squeegee 14" Strip Washer 14-7/8" Washer Squeegee	4007000 4006900 36286800		
Oven, Grill, Hood, Fryer Cleaning	Degreaser, Fryer Cleaner and Oven Cleaner	20" Utility Scrub w/Teflon bristles	4011302	Should rinse after use as prolonged exposure to strong alkaline cleaning chemicals will cause deterioration	
		24" Looped Fryer Brush w/2" Teflon bristles	4011202		
		28" Straight Utility Brush w/1-3/8" Teflon Bristles	4011002		
		30" Double Broiler King Wire Brush w/Handle	4029400		
		8" Brush w/Palmyra Bristles	3651300		Low cost alternative
		20" Brush w/Palmyra Bristles	36513L00		Low cost alternative

# CHEMICAL BRUSH TIE-IN

Cleaning Activity	Chemical Exposure/ Specific Use	Product Description	Product #	Notes
Wet Mopping, Floor Scrubbing, and Spill Management	Deck Wash, Degreaser, Quarry Tile Shock	8" Swivel Scrub w/DuPont Tynex Nylon Grit Fill	36531027	Do not use with acid. Use handle 4027100 or 4028500 *Note: Other colors available
		Hi-Lo™ Deck Scrub	4042302*	
	Floor Cleaner, All Purpose Mop Head Cleaner, General Cleaner; General Purpose Mopping and Spill Management	#24 Large 4-ply Cotton Cut End	36982400	Low cost alternative
		Large 4-ply Looped End Synthetic Cotton Blend Mop	36942400	Other sizes available
		Large 4-ply Looped End Rayon Blend Finishing mop	36967014	Other sizes available
	Floor Finish	Quik-Release™ Yellow Mop Handle	4166404	Other colors available
		Quik-Release™ Metal Mop Handle	36959500	
	Floor Stripper	#24 Large 4-ply Cotton Cut End Mop	36982400	Low cost alternative
	Safety Products	Wet Floor Sign	3690000	
	Squeegees	24" Plastic Hygienic squeegee	4156802	Other colors available Other sizes available
24" Threaded Handle, Metal Frame Squeegee		36682400		
30" Red Foam Rubber, Fat and Oil Resistant, Squeegee		36653000	Other sizes available	
Tile & Grout Cleaner	Swivel Head Grout Line Brush	36532003	Do not use with acid. Use handle 4027100 or 4028501	
	8-1/8" Toothbrush Style Grout Brush	36535103		
	Unique Design Tile & Grout Brush	4132302		
Upholstery & Carpet Spotting Chemical	Carpet/Upholstery Spotting Brush	4139502	*Note: Other colors available	

# SELECTING THE PROPER BRUSH

The Carlisle line of brushes and cleaning tools is designed for the food processing and foodservice industries. When designing a product, special consideration is given to preventing the possible transfer of bacteria to maintain superior foodservice hygiene. Cross-contamination from foods and personal hygiene are increasingly important under the new HACCP guidelines. We believe our line represents your very best choice for efficiency, service, and durability in food processing and foodservice sanitation, maintenance, and food preparation.

Brushes and cleaning tools have to be very specialized in order to meet all of the unique requirements of the food processing and foodservice industries. Brushes and cleaning tools are shaped and sized for specialized foods, pipes, fittings and equipment used exclusively in the food processing and foodservice environments. Proper bristle selection is also extremely important. Longer bristles offer greater flexibility when compared to the same material in a shorter trim. The key to efficiency is maximum bristle tip contact to surface and the proper type of bristle for the surface to be cleaned or prepped. Proper selection is extremely important for making the cleaning and prepping process as easy and efficient as possible.

## When considering brushes, most fall into one of three basic categories:

1. Circular “tube cleaning” type brushes – Tube cleaning brushes are designed to fit inside of drains, valves, tubes and other types

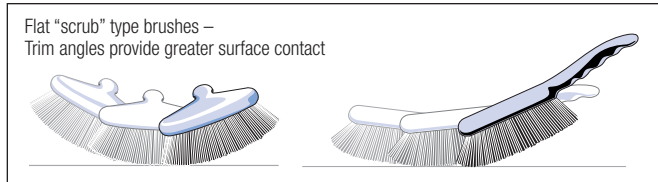


of fittings. Tube cleaning brushes are specified by diameter across bristle area. The diameter of the brush should be exactly the same as the opening of the tube or fitting to be cleaned. If the opening is larger than the brush diameter, the bristle tips will not contact the walls of the surface to be cleaned. A loose fitting brush means that multiple passes will be required or

that the surface may not be cleaned properly. A fit that is too tight reduces cleaning efficiency as well as possibly damaging bristles or resulting in a brush becoming stuck in an opening. The length of handles for tube brushes should be long enough to

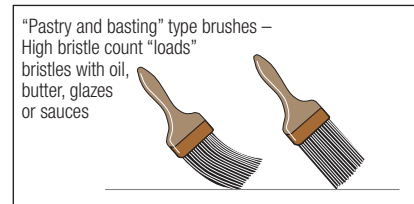
reach the entire length of tube or fitting to be cleaned. Tube brushes are often bent or curved to specific shapes for cleaning the outside of tubes, and fittings.

2. Flat “scrub” type brushes – Brushes in this category are for cleaning flat, curved or open surfaces. Many of our scrub brushes



have various “trim” angles to help keep bristle tips in contact with surfaces during the cleaning or food prepping process. Our brushes are ergonomically designed to provide superior comfort and control. Scrub brushes come in different handle shapes and lengths for a safe and convenient reach to surfaces.

3. “Pastry and basting” brushes – Pastry and basting brushes are designed with densely packed, fine bristles for greater “loading” of brush with melted butter, vegetable oils, sauces, glazes or other fluids used for food preparation. The greater the mass of bristles and the greater the bristle tip surface area; the greater the amount of fluids that can be spread across food surfaces. Our pastry and basting brushes have high bristle count for greater spreading and to eliminate bacteria harboring voids common on most other brands of pastry or basting brushes.

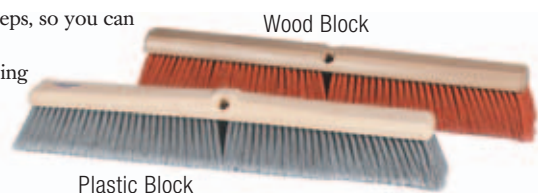


As health department standards continue to increase, brushes and cleaning tools will play an increasingly important role in meeting regulations and reducing maintenance costs. The correct brush or tool designed for the proper job will ensure greater efficiency and reduce health risks in the food processing and foodservice environments. Carlisle offers you the most comprehensive line of brushes and tools available to meet your very special requirements. We stock a wide range of products to meet customer demands and can provide custom designed products to serve solutions for even more specific needs. Carlisle is your single source for all food processing, foodservice, and janitorial cleaning products.

## CHOOSING THE RIGHT FLOOR SWEEP

Carlisle Sanitary Maintenance Products offers you a choice of plastic or wood block sweeps, so you can select the product which best fits your professional cleaning needs.

- extremely durable molded plastic blocks resist water, splits, splinters, cracks, and warping for many years of service; threaded handle hole will not strip
  - quality natural lacquered hardwood blocks provide classic, traditional dependability
- Both plastic and wood styles have 2 threaded handle holes which allow the block to be reversed, prolonging the life of the sweep.





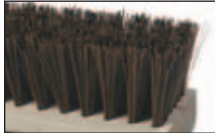
# BRISTLE MATERIAL GUIDE

*Choose the best brush for your specific application. To prevent bacteria growth, synthetic materials are the best choice with high quality natural materials a good alternate. Our fine selection of bristles offers you a choice of solutions for any application.*

## SYNTHETIC BRISTLES



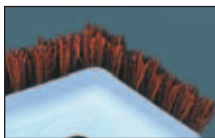
**SYNTHETIC CORN** – Excellent chemical resistance. X-shaped bristle allows for superior sweeping on carpeting and entry mats. Ability to sweep liquids and dry debris. Superior longevity versus natural corn. Sustains temperatures up to 225°F.



**SYNTHETIC PALMYRA** – An ideal substitute with all the inherent properties of natural Palmyra. Bristle material has superior chemical resistance to acids, oil, fungus, and bacteria growth and withstands temperatures up to 225°F. A superior alternative that exceeds natural bristle performance.



**NYLON** – Excellent abrasion resistance, shear/break strength, and bristle bend recovery. Very good chemical resistance and sustains temperatures up to 350°F. Best choice for abrasive, rough use.



**TYNEX® A NYLON** – DuPont Filament with silicon carbide in each bristle is designed for use in general light scrubbing to heavy-duty scrubbing and stripping. Tynex® A Nylon cleans floors faster and reaches into grout lines for thorough cleaning.



**ZIM-GRIT®** – An extra aggressive Nylon filament bristle material with Silicon Carbide Grit for scrubbing of heavily soiled floor surfaces.



**POLYESTER** – Excellent chemical resistance, ultra violet light resistance, and bristle bend recovery. Very good abrasion resistance and tear/break strength. Sustains temperatures up to 350°F. Best choice for all around use and for extreme exposure to cleaning chemicals.



**POLYPROPYLENE** – Excellent chemical resistance to acids, oils, fungus, and bacteria growth. Good abrasion resistance and shear/break strength. Sustains temperatures up to 225°F. Best choice as an economical synthetic foodservice alternative to natural fibers.



**FLAGGED POLYSTYRENE** – A specially treated type of Polystyrene that has excellent bristle bend recovery and tear/break strength. Very good chemical resistance and fine bristle tip design resists matting for use up to 180°F. Best choice for floor sweeps and brooms.



**POLYSTYRENE** – Has excellent bristle bend recovery and tear/break strength. Very good chemical resistance for general use up to 180°F. Best choice for floor sweeps and brooms.



**TEFLON®** – Excellent heat resistance, abrasion resistance, and shear/break strength. Very good chemical resistance and bristle bend recovery. Sustains temperatures up to 500°F. Best choice for high heat uses.

## NATURAL BRISTLES



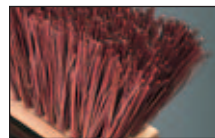
**HORSEHAIR** – A natural pointed tip, good shear/break resistance, and soft cleaning properties. A fine synthetic bristle is an ideal choice as an economic alternative to natural horsehair.



**BOAR BRISTLE** – Bleached and sterilized bristles can withstand temperatures of up to 500°F. Double boiling process ensures integrity of bristles over long life. Natural taper and split ends of boar bristle make this one of the best choices for high heat basting.



**BASSINE FIBER** – Natural stiff and coarse fibers from India palms is a classic choice for heavy floor cleaning.



**BASS FIBER** – Natural African Bass Fiber is coarse, stiff, and provides good flexibility for use in upright floor sweeps and as a blend with other fibers for other applications.



**PALMYRA** – Natural medium stiff fibers from India palms is an excellent choice for general floor sweeps. Provides good durability and bristle recovery.



**TAMPICO** – Natural Tampico fiber from the Mexican agave plant is a soft to medium soft bristle with very good durability. A medium synthetic bristle is an ideal choice as an alternative for natural Tampico.



**STAINLESS STEEL WIRE** – Rust-proof, excellent chemical resistance, excellent bend recovery, provides a high degree of abrasion and wear resistance. Best foodservice choice for aggressive cleaning on grills and other heavily soiled foodservice equipment.



**CARBON STEEL WIRE** – Provides a high degree of abrasion and wear resistance. Good bend recovery. Best choice for aggressive cleaning on grills and other heavily soiled equipment.



**BRASS WIRE** – Rust resistant; provides a high degree of abrasion but is softer than stainless steel or carbon steel to prevent equipment damage. For use on ovens, griddles, and other metal equipment that is heavily soiled but cannot sustain heavy scratches.

Teflon® is a registered trademark of E.I. DuPont DeNemours & Co., Inc.  
Tynex® A Nylon is a registered trademark of E.I. DuPont DeNemours & Co., Inc.

# SOLVENT & CHEMICAL RESISTANCE INFORMATION

## INTRODUCTION

Solvent and chemical resistance refers to the ability of a fiber to retain its important physical properties. The resistance of fibers to chemicals depends not only on the type of fiber and the chemical, but concentration, temperature, time, fiber diameter, stress, etc. The following are general comments on solvent and chemical resistance, followed by a more specific table.

## MATERIAL INFORMATION

### NYLON

Nylon has excellent resistance to most substances. It is however attacked by oxidizing agents, organic acids, mineral acids and aromatic alcohols. Nylon has excellent resistance to hydrocarbons (such as gasoline, kerosene and diesel fuel), oils, cleaning solutions and alkalis. It will absorb small amounts of water, low molecular weight alcohols (methyl, ethyl or isopropyl alcohols) and chlorinated solvents and be plasticized to them.

### POLYESTER

Polyester has excellent resistance to most substances. It is resistant to acids, oxidizers such as hydrogen peroxide and most solvents. Polyester has excellent resistance to hydrocarbon fuels, oils and

lubricants. It is however attacked by strong alkalis such as concentrated solutions of sodium hydroxide (lye or caustic soda), calcium hydroxide (lime, mortar), ammonia, trisodium phosphate or sodium carbonate (washing soda, soda ash).

### POLYPROPYLENE

Polypropylene offers excellent resistance to most water soluble chemicals, including fairly strong acids or alkalis and simple hydrocarbons. It may be attacked by oxidizing agents such as hydrogen peroxide, chlorinated solvents such as 1,1,1-trichloroethane and aromatic solvents such as xylene, especially at higher temperatures.

## RATINGS

**S: Satisfactory** – The material should give good service life when used with this chemical.

**M: Marginal** – Depending on temperature concentration, exposure, expected life, etc. The material may or may not give adequate performance. Specific testing for the application is recommended, or contact us for further details.

**U: Unsatisfactory** – The material will deteriorate in hours to weeks when used with this chemical.

REAGENT	POLYPROPYLENE	NYLON	POLYESTER	NOTES
Acetaldehyde	M	M	M	—
Acetic Acid 5%	S	M	S	Will etch Nylon
Acetic Acid 10%	S	M	S	—
Acetic Acid 100%	S	U	U	Will dissolve Nylon
Acetone	S	S	M	—
Acetophenone	S	S	—	—
Allyl Alcohol	—	S	S	—
Aluminum Chloride	S	M	S	—
Aluminum Sulfate	S	S	S	—
Ammonia Solution	S	S	S	aka Ammonium Hydroxide
Amyl Alcohol	S	S	S	—
Amyl Acetate n-	S	S	S	—
Amyl Chloride	M	—	—	—
Anti-Freeze	S	S	S	—
Aqua Regia	S	U	U	—
Aromatic Hydrocarbons	U	S	M	—
Barium Carbonate	S	S	S	—
Benzaldehyde	M	S	—	—
Benzene	U	S	M	—
Benzoic Acid	S	S	S	—
Benzyl Acetate	M	—	—	—
Borax	S	S	S	—
Boric Acid	S	S	S	—
Brake Fluid	—	S	S	—
Bromine Liquid	M	U	U	—
Butanol	S	S	S	—
Butter	S	S	S	—
Butyl Acetate iso	S	S	M	—
Butyl Acetate n-	S	S	M	—
Butyl Alcohol iso	S	S	S	—
Butyl Alcohol n-	S	S	S	—
Butyl Phthalate	S	S	S	—
Calcium Chloride	S	U	S	—
Calcium Hypochlorite 15%	S	U	S	—
Camphor	U	S	—	—

REAGENT	POLYPROPYLENE	NYLON	POLYESTER	NOTES
Carbon Tetrachloride	U	S	S	—
Carbolic Acid 50%	S	U	U	aka Phenol/ Solvent for Nylon
Carbolic Acid 100%	S	U	U	aka Phenol/ Solvent for Nylon
Caster Oil	S	S	S	—
Caustic Soda	S	M	M	aka Sodium Hydroxide
Cellosolve	S	—	—	—
Cellulose Acetate	S	S	—	—
Cetyl Alcohol	S	S	S	—
Chlorobenzene	U	S	M	—
Chloroform	U	M	M	Temporarily softens Nylon
Chlorine	U	U	U	—
Chromic Acid	S	U	M	—
Citric Acid 10%	S	M	S	—
Citric Acid 20%	S	M	S	—
Citrus Oil	S	S	S	—
Cocoa Butter	S	S	S	—
Cod Liver Oil	S	S	S	—
Coconut Oil	S	S	S	—
Copper Salts	M	M	M	—
Corn Oil	S	S	S	—
Cottonseed Oil	S	S	S	—
Cyclohexane	M	S	S	—
Cyclohexanol	S	S	—	—
Cyclohexanone	M	S	—	—
Decalin	U	S	M	—
Detergents	S	S	S	—
Diacetone	S	M	U	—
Dibutyl Sebacate	S	—	—	—
Dichlorobenzene p-	—	S	—	aka Moth Balls
Diethylene Glycol	S	M	M	—
Diethylketone	S	M	U	—
Dimethyl Formamide	S	M	S	—
Epichlorohydrin	S	M	—	—

# SOLVENT & CHEMICAL RESISTANCE INFORMATION

REAGENT	POLYPROPYLENE	NYLON	POLYESTER	NOTES
Ether	S	S	S	—
Ethyl Acetate	M	S	M	—
Ethyl Alcohol 95%	S	S	S	Temporarily softens Nylon
Ethyl Chloride (Gas & Liq.)	M	S	—	—
Ethyl Ether	S	S	S	—
Ethylene Lactate	—	M	—	—
Ethylene Dichloride	M	S	M	—
Ethylene Glycol	S	S	S	—
Ethylene Oxide	M	M	S	—
Ferrous Chloride	S	U	S	—
Formaldehyde	S	S	S	—
Formic Acid	S	U	S	Solvent for Nylon
Furfuryl Alcohol	M	S	S	—
Gasoline	M	S	S	—
Glucose 30%	S	S	S	—
Glycerin	S	M	S	—
Heptyl Alcohol n-	—	M	—	—
Hexane	M	S	S	—
Hexyl Alcohol n-	—	M	—	—
Hydrochloric Acid 10%	S	U	S	Dissolves Nylon
Hydrochloric Acid 38%	S	U	M	Dissolves Nylon
Hydrofluoric Acid	S	U	U	—
Hydrogen Peroxide 3%	S	U	S	—
Hydrogen Peroxide 30%	M	U	S	—
Hydroquinone	S	U	S	—
Iodine Tincture	S	U	—	—
Isopropyl Alcohol	S	S	M	—
Derosene	M	S	S	—
Lactic Acid 10%	S	M	S	—
Lanolin	S	S	S	—
Lard	S	S	S	—
Lauryl Alcohol	S	S	S	—
Lemon Juice	S	M	S	—
Lubricating Oil	S	S	S	—
Lye	S	M	M	—
Magnesium Carbonate	S	S	S	—
Maleic Acid 10%	S	S	S	—
Mercuric Chloride 5%	S	U	—	—
Methyl Acetate	M	S	M	Temporarily softens Nylon
Methyl Alcohol	S	S	S	Temporarily softens Nylon
Methyl Chloride	M	—	—	—
Methyl Ethyl Ketone	M	S	M	Softens Nylon
Methyl Isobutyl Ketone	M	S	U	—
Methyl Propyl Ketone	M	S	U	—
Methyl Salicylate	—	—	—	aka Oil of Wintergreen
Methylene Chloride	M	M	U	—
Milk	S	S	S	—
Mineral Oil	M	S	S	—
Monochlorobenzene	U	S	M	—
Motor Oil	S	S	S	—
Nitric Acid	M	U	M	—
Nonyl Alcohol	S	S	S	—
Octyl Alcohol	S	S	S	—
Oils-Essential	M	S	S	—
Oils-Vegetable	S	S	S	—
Oleic Acid 100%	S	S	S	—
Orange Juice Fresh	S	S	S	—
Orange Juice Conc.	S	S	S	—
Oxalic Acid 10%	S	M	S	—

REAGENT	POLYPROPYLENE	NYLON	POLYESTER	NOTES
Ozone	M	M	M	—
Paint Thinner	M	S	S	aka VM & P naphtha
Palm Oil	S	S	S	—
Palmitic Acid	S	S	S	—
Peanut Oil	S	S	S	—
Pectin	S	S	S	—
Perchloroethylene	U	S	—	—
Petroleum Distillate	M	S	S	—
Petroleum Jelly	S	S	S	—
Phenol 5%	S	U	U	Solvent for Nylon
Phosphoric Acid 50%	S	U	S	—
Potassium Hydroxide 30%	S	S	U	—
Potassium Hydroxide 35%	S	S	U	—
Potassium Hydroxide 50%	S	M	U	—
Potassium Bromide	S	S	S	—
Potassium Ferricyanide	S	S	—	—
Potassium Iodide	S	—	—	—
Potassium Permanganate	M	U	S	—
Potassium Thiocyanate	S	U	S	—
Propyl Alcohol iso-	S	M	M	—
Propylene Glycol	S	S	S	—
Resorcinol	—	U	—	Solvent for Nylon
Salicylic Acid	S	S	M	—
Silver Nitrate	S	S	S	—
Sodium Acetate	S	S	S	—
Sodium Benzoate	S	S	S	—
Sodium Bicarbonate	S	S	S	—
Sodium Bisulphite	S	S	S	—
Sodium Borate	S	S	S	—
Sodium Bromide	S	S	S	—
Sodium Carbonate	S	S	S	—
Sodium Chloride	S	S	S	—
Sodium Dichromate 10%	S	M	M	—
Sodium Hydroxide 40%	S	M	U	—
Sodium Hypochlorite 5%	M	U	M	aka bleach
Sodium Tetraborate	S	S	M	aka Borax
Sodium Thiosulfate	S	S	S	aka Hypo
Stannic Chloride	S	M	—	—
Stearic Acid (p.w.d.)	S	S	S	—
Stoddard Solvent	M	S	S	—
Sucrose 30%	S	S	S	—
Sulphuric Acid 2%	S	M	S	—
Sulphuric Acid 50%	S	U	U	—
Sulphuric Acid 96%	S	U	U	—
Tannic Acid 2%	S	—	S	—
Tartaric Acid	S	S	S	—
Tea (sol.)	S	S	S	—
Tetrahydrofuran	S	S	S	—
Tetralin	M	S	S	—
Thionyl Chloride	—	U	—	—
Toluene	M	S	M	—
Trichloroethylene (1,1,1)	U	S	S	Softens Nylon
Trisodium Phosphate	S	S	M	—
Triethylene Glycol	S	S	S	—
Turpentine	M	S	S	—
Water	S	S	S	—
Water Carbonated	S	S	S	—
Xylene	M	S	M	—
Zinc Chloride	S	U	S	—
Zinc Salts in solution	S	U	S	Cracks Nylon
Zinc Stearate	S	S	S	—




# SELECTING THE PROPER ROTARY BRUSH

- Find the make and model number of your floor machine on pages 85-95 to determine the correct block size and clutch plate.
  - Brushes and long fill pad drivers for single brush, swing machines are usually 2" smaller than the machine size. For example: a 20" machine uses an 18" block.
  - Short trim pad drivers are usually 1" smaller than the machine size. Add 1" to the block size in this table for these drivers.
  - Special sizes, or brushes without available plates may require a preparation charge. These are noted by instructions to CALL\* Customer Service for information and prices.
- Find the brush type for your cleaning application in the Brush Selection Guide on pages 68-79.
- After determining the brush type and block size, find the brush part number from the tables on pages 81-84.

NILFISK-ADVANCE (Advance)		
All Purpose Matador 17	15"	4147P
All Purpose Matador 20	18"	4147P
BA 5321, BA 5321D	20"	4148P
Converta Max 26 (2 brushes)	12"	5-1/2" CH - P74
Convertamatic 17	15"	4147P
Convertamatic 18	16"	5-1/2" CH - P74
Convertamatic 20	18"	4147P
Convertamatic 21	19"	5-1/2" CH - P74
Convertamatic 24 (2 brushes)	11"	5-1/2" CH - P74
Convertamatic 26 (2 brushes)	12"	5-1/2" CH - P74
Convertamatic 28 (2 brushes)	14"	5-1/2" CH - P74
Convertamatic 32 (2 brushes)	16"	5-1/2" CH - P74

**STRATA-GRIT®**

- for aggressive scrubbing of concrete and aggressive stripping of resilient floors
- .060" DuPont Tynex® A\* nylon fibers impregnated with 46 grit silicon carbide
- available in 11" - 20" diameter showerfeed blocks with 1-3/4" trim
- replaces high productivity pads
- splash guard included



Clutch plate and riser block charts are listed on page 78-80.

STRIPPING BRUSHES			
STRATA-GRIT®			
Block Dia.	Previous Flo-Pac® Number	Previous Carlisle Number	New Product Number
* 9"	N/A	—	N/A
10"	N/A	—	N/A
11"	11000ST	R1100X60500	361100G60
12"	12000ST	R1200X60500	361200G60
12-1/2"	N/A	—	N/A
13"	13000ST	R1300X60500	361300G60
13-1/2"	N/A	—	N/A
14"	14000ST	R1400X60500	361400G60
15"	15000ST	R1500X60500	361500G60
16"	16000ST	R1600X60500	361600G60
16-1/2"	N/A	—	N/A
17"	17000ST	R1700X60500	361700G60
18"	18000ST	R1800X60500	361800G60

HARDWARE					
PLASTIC UNIVERSAL 5" CH			METAL UNIVERSAL 5" CH		
Previous Flo-Pac® Number	Previous Carlisle Number	New Product Number	Previous Flo-Pac® Number	Previous Carlisle Number	New Product Number
4183P		364183P	4101A		364101A
4192P		364192P	4101B		364101B
4147P		364147P	4101C		364101C
4146P		364146P	4101D		364101D
4148P		364148P	4101E		364101E
			4101F		364101F



Figure 1

- Flo-Pac® recommends the popular "P" Series Plastic Universal Clutch Plate. Alternate Universal Metal and Heavy-Duty "N" Series Metal Plates are described on pages 77-80.
- When ordered with a brush, clutch plates are mounted with no installation fee.
- If ordering a brush without a clutch plate, or if no plate is available for your model, specify machine model, block diameter (dimension A), and center hole diameter (dimension B). See Figure 1 at left.

\* Tynex® A Nylon is a registered trademark of E.I. DuPont DeNemours & Co., Inc.

# ROTARY BRISTLE MATERIAL GUIDE



*Choose the best brush for your specific application. Synthetic materials are the best choice with high quality natural materials as a good alternate. Our fine selection of bristles offers you a choice of solutions for any application.*

## SYNTHETIC BRISTLES



**TYNEX® A\* NYLON** – An aggressive Nylon filament with Silicon Carbide Grit can be used for stripping, scrubbing and daily maintenance operations.

Use these Tynex® A\* Nylon options instead of traditional floor pads:

### SPECIFIC APPLICATION

#### APPLICATION

Super Stripping  
Stripping/Scrubbing  
Scrubbing

#### TYNEX® A\* NYLON

Strata Grit® Plus  
Strata Grit®, Nylo-Grit®  
Scrub-Grit®II, Dyna-Scrub®

## NATURAL BRISTLES



**TAMPICO** – A natural material from the Mexican Agave plant. A soft to medium durable bristle that is highly resistant to chemicals and solvents used for high luster polishing applications. Tampico is perfect for any floor care maintenance program.



**UNION MIX** – An economical blend of two or more bristle materials, usually Tampico and Palmyra which is used in general floor buffing/polishing operations.



**POLYPROPYLENE** – A synthetic bristle material with more durability than plastic; highly resistant to chemicals, fungus, and bacteria. Ideal for floor care programs that require general scrubbing, wet scrubbing, as well as stripping and re-coating operations.



**BASSINE** – A natural, high quality coarse bristle material for general scrubbing applications. Economical and durable, Bassine does have limitations when compared to synthetic fibers.



**NYLON** – A durable synthetic bristle material with excellent abrasion resistance and bristle bend recovery. Nylon provides very good chemical resistance and is an excellent bristle choice for general scrubbing.



**STEEL WIRE** – Provides excellent chemical resistance and a high degree of abrasion. Primarily used in scrubbing and scarifying concrete floors and surfaces.

## WARNING:

Do not use brush or pad with flammable materials (fuels, solvents, thinner, etc.) as serious bodily harm or injury could result from possible fire or explosion. Any brush used for carpet cleaning must be broken in properly or carpet damage could result.

\* Tynex® A Nylon is a registered trademark of E.I. DuPont DeNemours & Co., Inc.